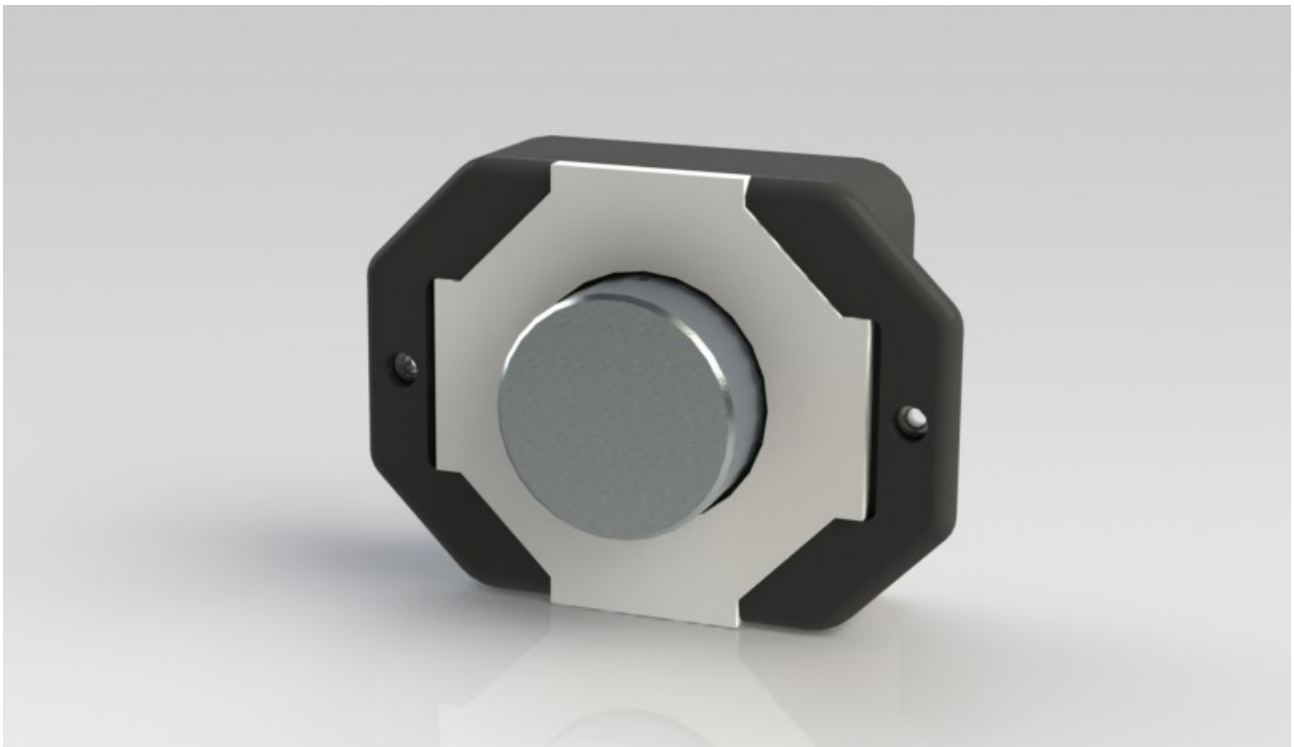


User Manual

Model 1895
Visual Volume™ Control



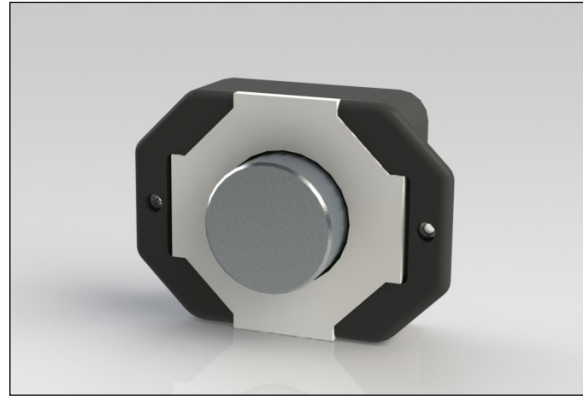
Audio  Authority®

Introduction

The Model 1895 Rotary Control with Visual Volume™ glow ring is designed to execute volume commands and to advance audio tracks with a demonstration device such as an Audio Authority® 1803 High Resolution Audio Player.



1895 mounted in display with black knob (pn: 672-362)



1895 rotary control assembly unmounted with silver knob (pn: 672-363)

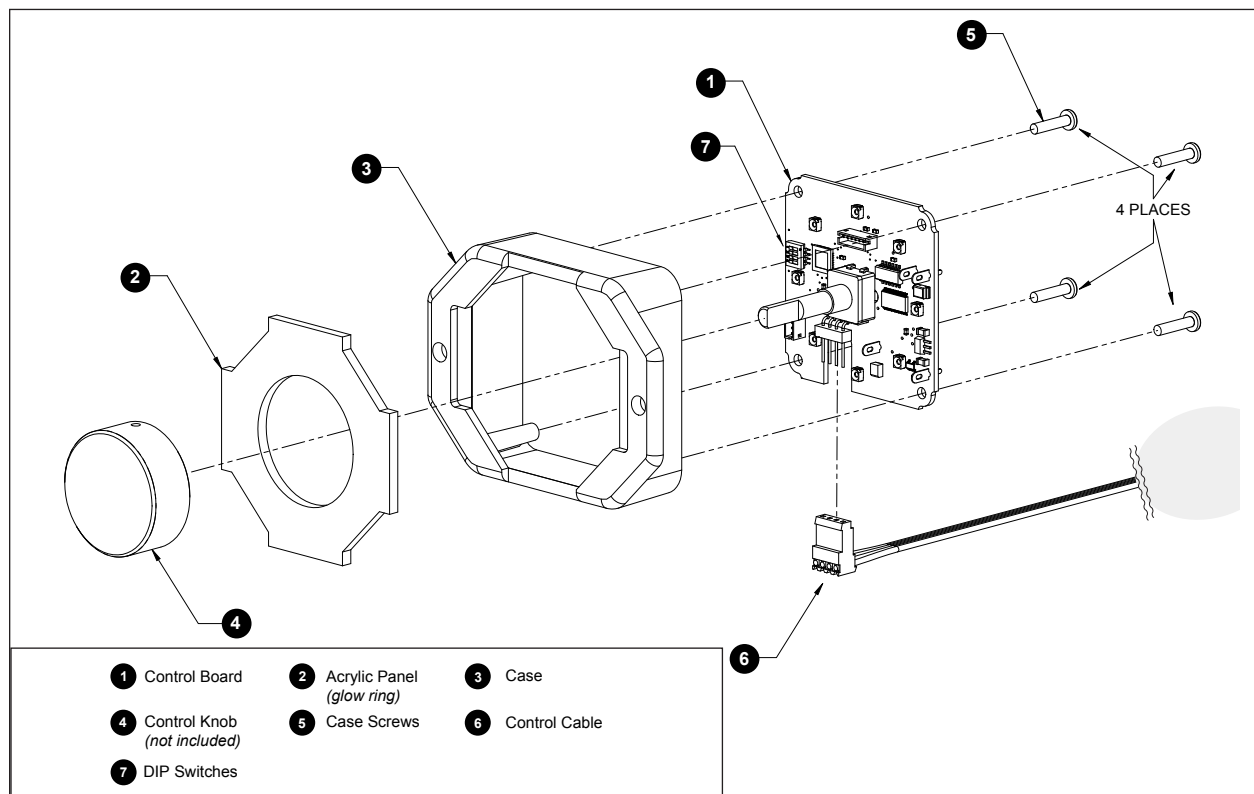
Package Contents

Check the packaging and make certain the following items are contained in the shipping carton:

- 1895 Rotary Control assembly (knob sold separately)
- Acrylic panel
- User manual

1895 Assembly Details

The 1895 is pre-assembled with the exception of the acrylic panel, which is bubble-wrapped separately to protect it during transit. The fixture design should include threaded studs pressed into the metal fascia, 3 inches apart, flanking a 2.25 inch hole. Follow the instructions on [page 3](#) for mounting.



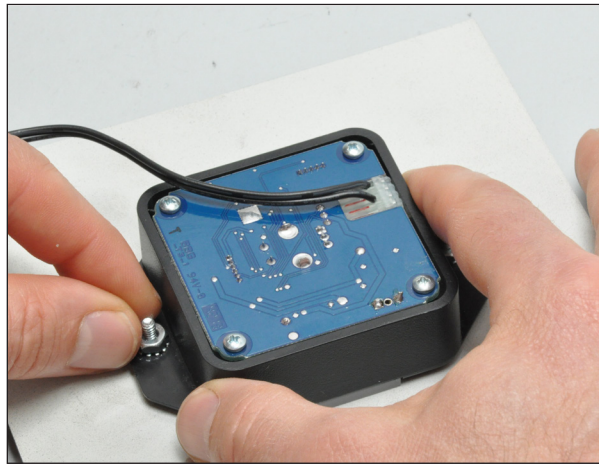
Installation



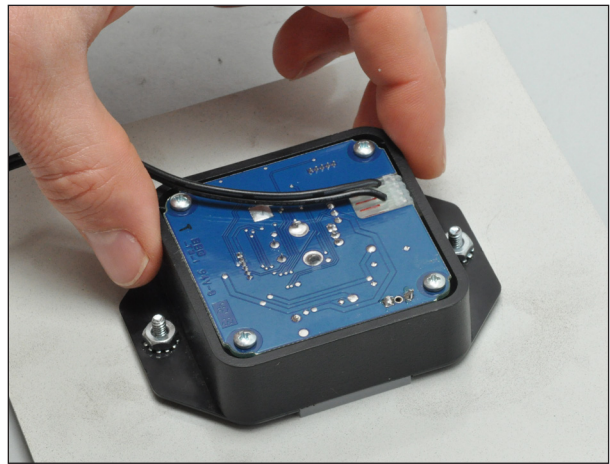
Set the addressable DIP switches if applicable (see page 4). Mount knob (sold separately; pn: 670-362 black, 670-363 silver) to the control shaft of the 1895 rotary control assembly and tighten the hex screw.



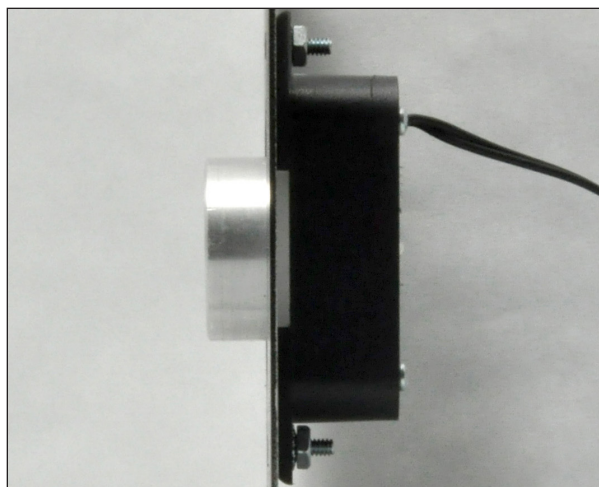
Press the acrylic panel into the face of the 1895 Rotary control assembly.



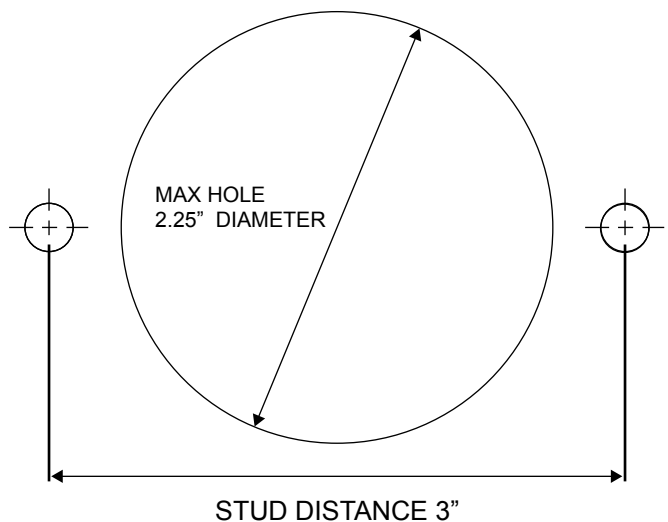
Place assembly onto the press-in studs of the display fascia and tighten the nuts.



With both nuts tight the 1895 rotary control assembly should be snug against the fascia.

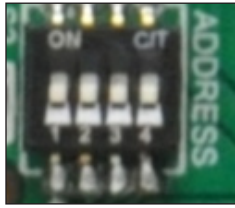


The side view of the assembly; note the acrylic panel pressed against the backside of the display fascia. The edge of the fascia will be slightly raised above the acrylic panel of the 1895 rotary control.



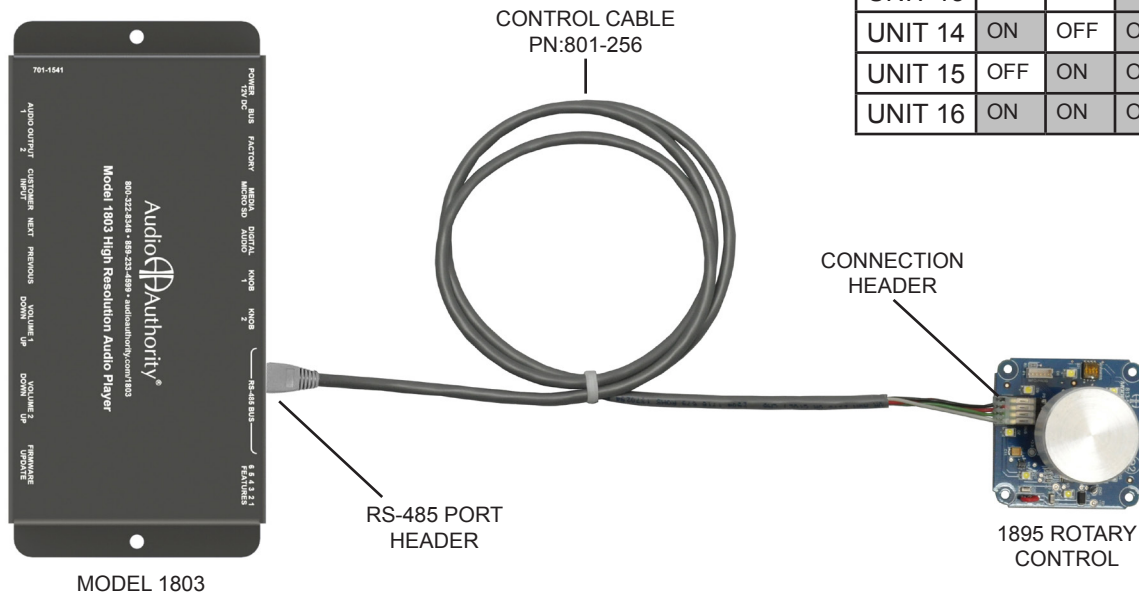
Address Settings

Each 1895 DIP address switch is to unit 1 by default. Set the DIP address switch as shown in the chart when using more than one 1895.



ADDRESS 1
(DEFAULT)

Switch	1	2	3	4
UNIT 1	OFF	OFF	OFF	OFF
UNIT 2	ON	OFF	OFF	OFF
UNIT 3	OFF	ON	OFF	OFF
UNIT 4	ON	ON	OFF	OFF
UNIT 5	OFF	OFF	ON	OFF
UNIT 6	ON	OFF	ON	OFF
UNIT 7	OFF	ON	ON	OFF
UNIT 8	ON	ON	ON	OFF
UNIT 9	OFF	OFF	OFF	ON
UNIT 10	ON	OFF	OFF	ON
UNIT 11	OFF	ON	OFF	ON
UNIT 12	ON	ON	OFF	ON
UNIT 13	OFF	OFF	ON	ON
UNIT 14	ON	OFF	ON	ON
UNIT 15	OFF	ON	ON	ON
UNIT 16	ON	ON	ON	ON



Connect the Control cable from the 1895 rotary control to the 1803 RS-485 port header as shown above (1895 shown without mounting case for example purposes).

Operation with 1803 Music Player

The 1895 Visual Volume™ Control knob gives visual feedback with its glow ring, its brightness indicating changes in volume; a slow pulse highlights the knob during the 1803 attract mode. Push to play the next track*, and rotate knob to adjust volume.

* Note: The attract mode and push functionality may be different based on the connected device.

Audio  Authority®

2048 Mercer Road, Lexington, Kentucky 40511-1071
800-322-8346 • 859-233-4599 • Fax: 859-233-4510
www.audioauthority.com • support@audioauthority.com

752-748 Rev. 20180906