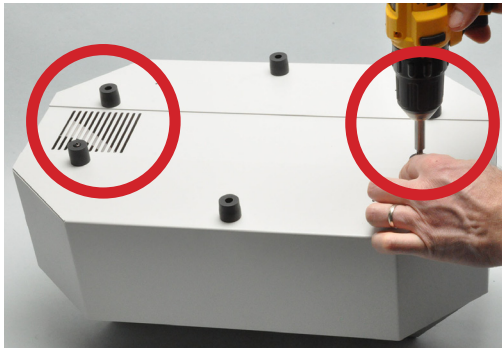


Special Charging Profile for Concorde Batteries

Enhanced Flight 2835A-B1 and 28780A-B1 GPUs with integral BatteryMINDers feature two charging profiles. The standard charging profile is suitable for most all general aviation lead-acid batteries and is the default setting from the factory. The alternate charging profile is exclusively for Concorde batteries with slightly higher charging and maintenance voltages. If using the internal BatteryMINDER with a Concorde battery, the alternate setting is recommended by Concorde Battery Corporation for best results and maximum battery life.

IMPORTANT: This upgrade should be performed by a qualified technician.

See a video on this procedure here: www.audioauthority.com/concorde



Set GPU upside down on a bench. Remove front and back feet (leave center feet on cargo pockets).



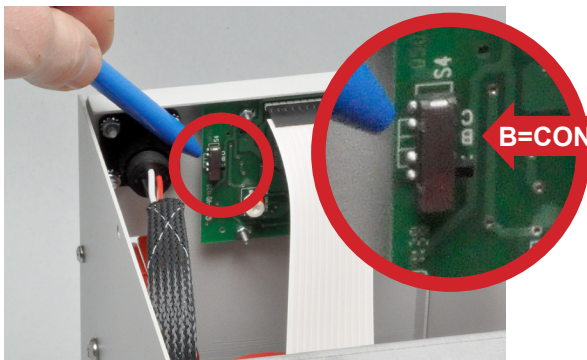
Remove six screws, three screws on each side, as shown.



Remove the bottom panel.



Find the circuit board behind front panel.



The three-position switch is located near the edge of the circuit board. The switch lever is located on the side of the switch next to the **A - B - C** legend.

The factory default setting is “A” for standard 28 Volt aviation batteries. **Move the switch to “B” for optimal use with Concorde batteries.** Do not use the “C” position.

Assemble the GPU in reverse order. Do not over tighten foot screws. It is a good practice to mark the GPU on the BatteryMINDER panel to indicate that it is optimized for Concorde batteries.

Audio  Authority[®]

2048 Mercer Road, Lexington, Kentucky 40511-1071 USA
Phone: 859-233-4599 • Fax: 859-233-4510
Customer Toll-Free USA & Canada: 800-322-8346
www.audioauthority.com • support@audioauthority.com