

# Installing the Model 1547 Traffic Sensor

The Model 1547 is a complete traffic detection solution for use with Series 1500 Intercom Systems. The sensor's operating temperature range is -20° to +55°C (-4° to 131°F). A heater may be required in the drive-up enclosure for some low temperature applications. The green LED indicates Power On. The N.O. Output On is indicated by the yellow LED.



Figure 1. 1547 TRAFFIC SENSOR

1. Using a flat blade screw driver, carefully remove the knockout on the bottom of the 1520 Lane Station (Figure 2).
2. Plug the 1547 connector into the exposed port on the bottom of the 1520 (Figure 2).
3. Drill two 5/16 inch holes 3/8 inch apart. Center the holes on the 1547's IR emitter and receiver lenses (see detail below).
4. Turn the potentiometer on top of the sensor all the way clockwise (Figure 3).
5. Using the included hardware, mount the 1547 to the drive-up enclosure (Figure 2).

Figure 2.

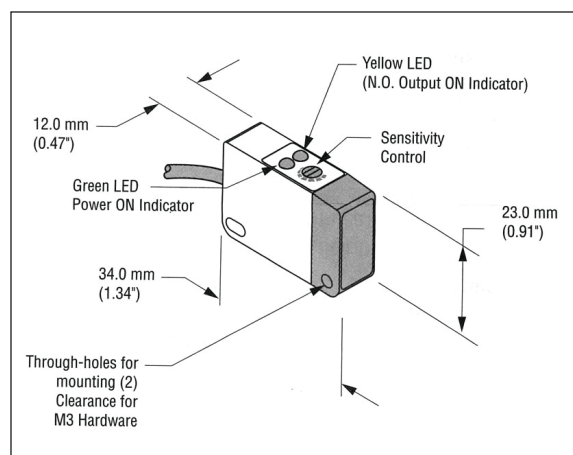
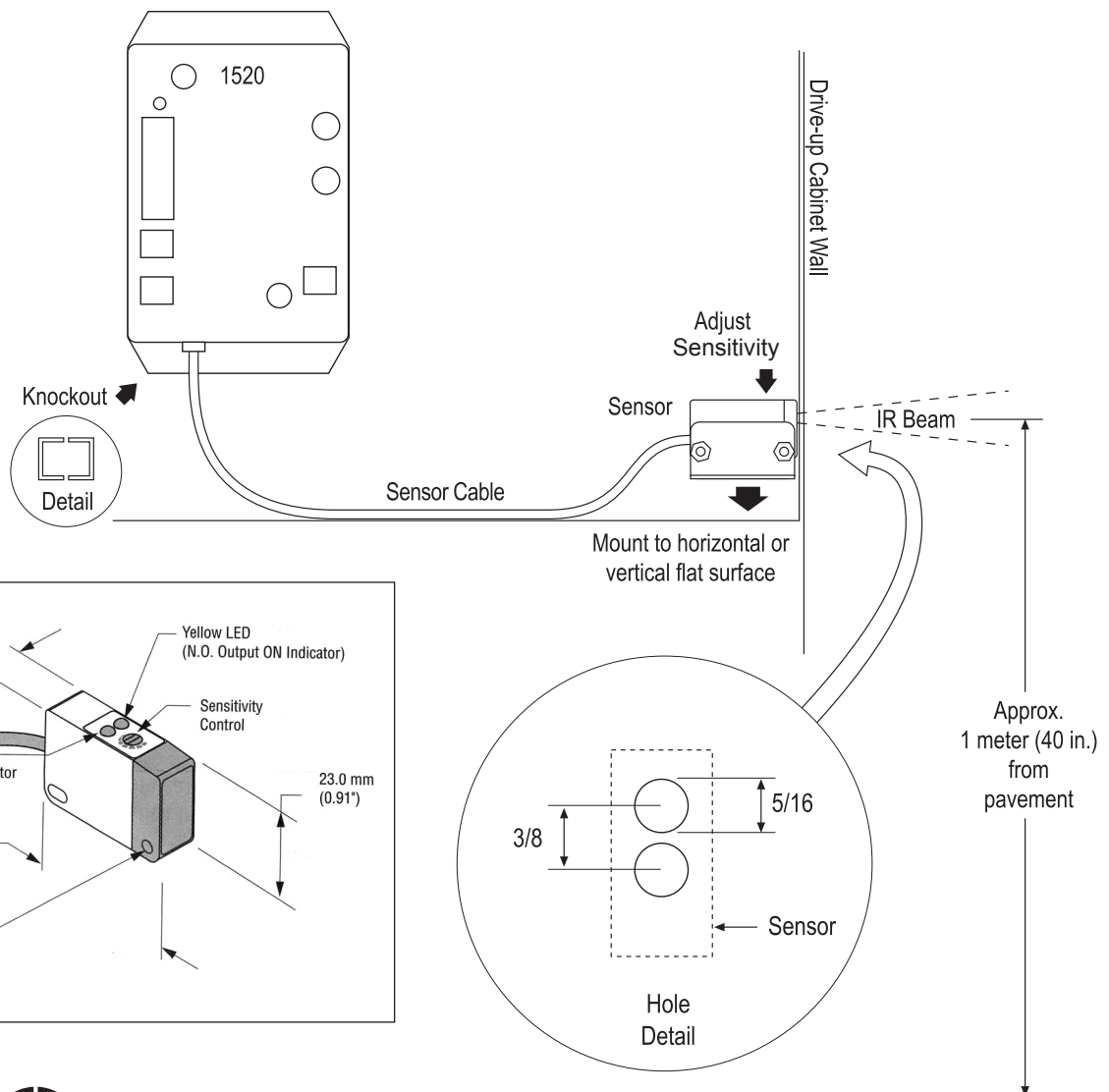


Figure 3.

**Audio Authority®**

2048 Mercer Road, Lexington, Kentucky 40511-1071 USA  
 Phone: 859-233-4599 • Fax: 859-233-4510  
 Customer Toll-Free USA & Canada: 800-322-8346  
 www.audioauthority.com • support@audioauthority.com

752-527B  
 20150406