

Installation Guide

ADX-0808 and ADX-1616 Audio Matrix Pre-amp Systems



Audio  Authority®



2048 Mercer Road, Lexington, Kentucky 40511-1071
800-322-8346 • 859-233-4599 • Fax: 859-233-4510
www.audioauthority.com • support@audioauthority.com

Audio Authority and the Double-A Symbol are registered trademarks of Audio Authority Corp.
Copyright April, 2015, all rights reserved.

Installation and Operation Guide

ADX-0808 and ADX-1616

Audio Matrix Pre-amp Systems

Firmware version 2.5.3.

Table of Contents

<i>Introduction</i>	4
<i>Panel Descriptions</i>	5
<i>Getting Started</i>	6
<i>Installation</i>	7
<i>Operation</i>	8
<i>Configuration</i>	10
<i>Using Ethernet, RS-232, and IR</i>	16
<i>Appendix A: Upgrading ADX Firmware</i>	18
<i>Appendix B: Troubleshooting</i>	19
<i>Specifications</i>	19

Warnings

To reduce the risk of fire or electric shock, do not expose this unit to rain or moisture.



The exclamation point symbol alerts users to important operating and maintenance instructions in this booklet.

- ❑ Read this manual before installing or using this product.
- ❑ This product must be installed by qualified personnel.
- ❑ Do not open the cover—there are no user-serviceable parts inside.
- ❑ Do not expose this unit to excessive heat.
- ❑ Install only in dry, indoor locations.
- ❑ Do not obstruct the ventilation slots.
- ❑ Clean the unit only with a dry or slightly dampened soft cloth.



audioauthority.com/adx_tips

INTRODUCTION

The ADX is an innovative analog audio matrix with advanced digital signal processing. The DSP features and multiple control interface options make it an excellent solution for audio distribution in residential and commercial applications.



audioauthority.com/adx_tips

Key Features

- Sixteen source inputs/sixteen zone outputs (ADX-1616) or eight source inputs/eight zone outputs (ADX-0808)
- Advanced DSP features per zone output, including 10-band EQ, low-pass filter and tone controls (see below)
- Integrates seamlessly with third party control systems such as Control4, URC, RTI and others
- Discrete Ethernet, IR and RS-232 codes available for download - use with virtually any third party IR control system
- DB-25 quick-connect audio output to Audio Authority SonaFlex™ amplifiers
- Zone grouping (10 groups) and Source/Zone combination presets (10 source/zone combinations)
- Global source selection (all zones on to same source)
- Simple configuration using PC Setup Utility via Ethernet, serial or USB drive
- Rack ears included (2U)

DSP Features

- Custom DSP settings per zone: 10-band Equalization (ZQ™), bass/treble, and more
- Low-pass and high-pass filters, plus zone grouping provides a 2.1 audio configuration to each zone
- 10 global EQ presets which can be saved and recalled from any zone
- DSP settings can be updated on the fly using serial commands

Control Interfaces

- Ethernet
- RS-232 Serial
- Front panel IR sensor
- Rear panel IR input (3.5 mm jack or 3-pin header)
- Front panel capacitive touch buttons and knob with LCD screen

Carton Contents

- Model ADX-1616 or ADX-0808 Pre-amp
- 18-volt power supply
- Rack ears
- User manual

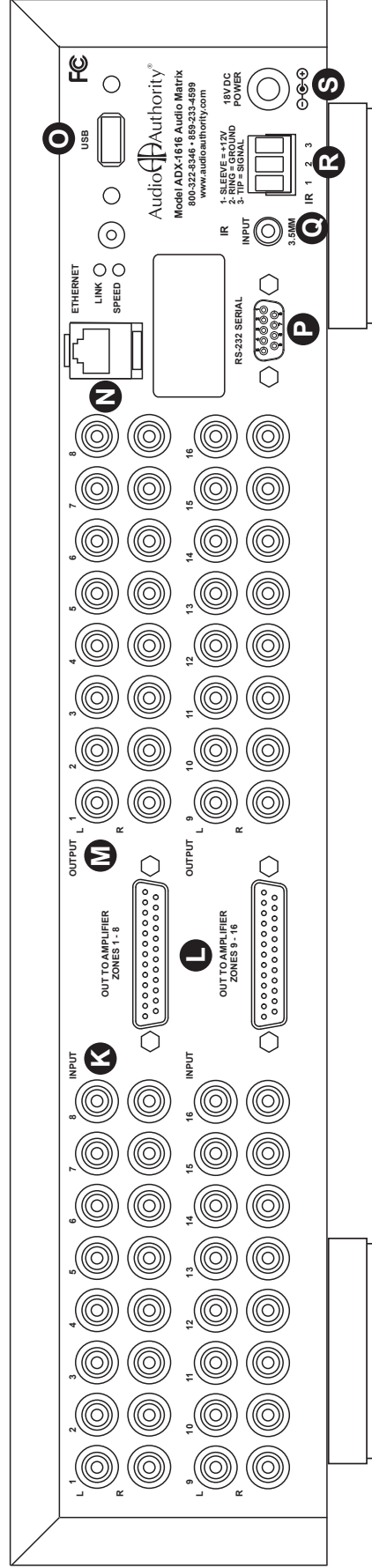
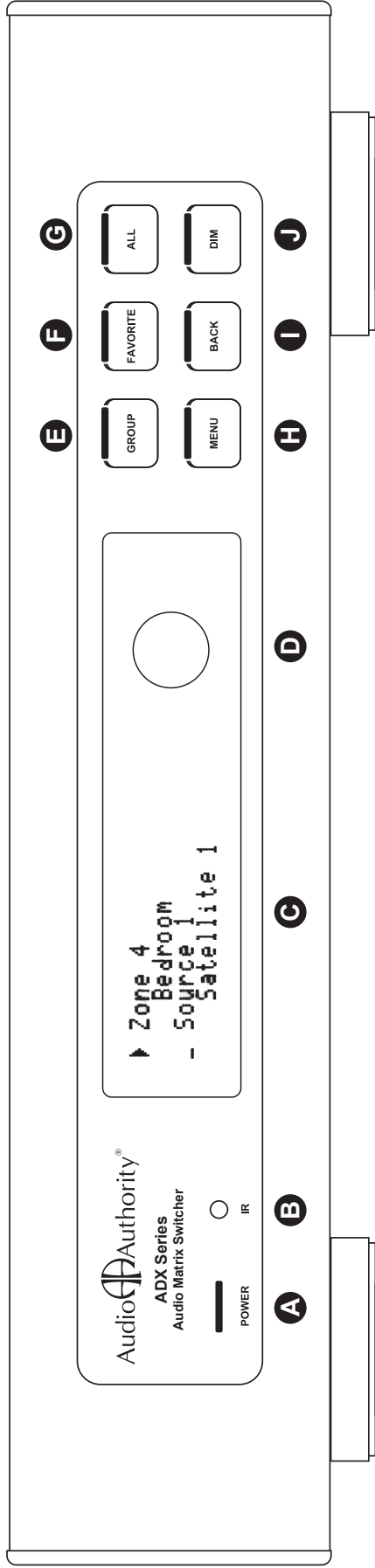
Other Materials You May Need

- Patch cables (Ethernet, RS-232, RCA)
- Infrared sensors
- Third party programmable remote or touchscreen interface
- USB 1.1 or USB 2.0 compliant thumb drive

PANEL DESCRIPTIONS

*ADX-1616 shown

- A** Power Indication LED
- B** Front Panel IR Receiver
- C** Vacuum Fluorescent Display (VFD)
- D** Multi Function Knob
- E** Group Selection Button
- F** Favorite Selection Button
- G** All Selection Button
- H** Menu Selection Button
- I** Back Button
- J** Dim Button



- K** Analog Audio Input Jacks 1-16 for ADX-1616 or 1-8 for ADX-0808
- L** DB25 Audio Output to Audio Authority Amplifiers
- M** Analog Audio Output Jacks 1-16 for ADX-1616 or 1-8 for ADX-0808
- N** Ethernet Connector with Link and Speed Indicators
- O** USB Connector (For USB Flash Drive Programming Only)
- P** RS-232 DB9 Connector
- Q** 3.5MM IR Input Jack
- R** 3-Wire IR Input Terminal Block or Amp Trigger
- S** 5.5MM 18V Center Positive Power Connection

GETTING STARTED

- Confirm that nothing is missing from your shipping carton. Refer to **Carton Contents** on page 4.
- Record the serial number (found on the product rear panel) in the space provided on the inside front cover of this manual for easy reference.
- Activate your warranty and receive future upgrade notifications by registering your purchase at www.audioauthority.com/register.
- Read this instruction manual to become familiar with the configurations and functions of this product.

Register Online



audioauthority.com/adx_tips

Essential Steps

Although it is highly recommended that you follow the more detailed installation instructions provided in this manual, a very basic installation may be accomplished by performing the following steps:

1. Connect source equipment to the input jacks. (Detailed instructions located in the Installation Section.)
2. Connect ADX zone output jacks to a multi-channel amplifier OR alternatively, connect the DB-25 audio output to an Audio Authority SonaFlex multi-channel amplifier. (Detailed instructions located in the Installation Section.)
3. Connect the ADX's power supply to a suitable AC outlet using ONLY the furnished power supply. After a moment, the ADX boots up and is ready to perform switching. Use the front panel controls to select the preferred source input and the zone output number(s) of your preferred listening zones.

Choosing a Control Interface

The chart below provides an overview of the different range of capabilities when using each control method. For more detailed instructions on the various control methods available, please refer to the following sections:

- Front Panel Controls, see page 8
- RS-232 (serial), see page 16
- Ethernet, see page 16
- IR, see page 17

Control Interface Capabilities

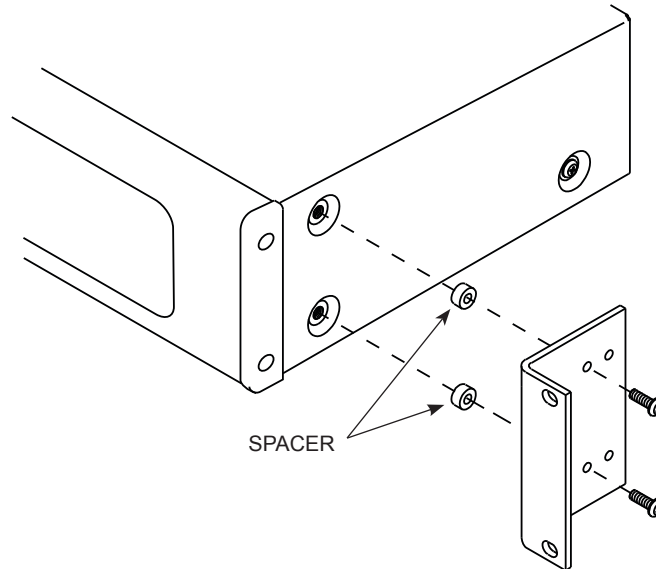
All commands are available on Ethernet and RS-232, but other control methods are limited as shown.

Note: The PC Utility is not suitable as a day-to-day control interface.

	RS-232	Ethernet	Infrared	Front Panel
Audio signal switching	X	X	X	X
Dimming	X	X		X
Lock IR	X	X		
Lock front panel interface	X	X		
Change Ethernet settings	X	X		
Upgrade firmware				X
Group and Favorite creation	X	X		
Group and Favorite switching	X	X	X	X

INSTALLATION

The ADX is designed so that it may be installed either on a shelf or in a standard 19-inch equipment rack. If rack mounting, remove the feet and the cover screws adjacent to the front panel of the unit. Reuse the cover screws to mount the Model 1192A rack adapters supplied with the ADX. Be sure to place a spacer under the adapters at every screw location. Secure the ADX to the rails of the equipment rack with the screws supplied with the rack adapter kit.



Initial Audio Setup

Independently test each component to be connected to the ADX prior to system assembly. This will reduce troubleshooting measures later. Verify basic ADX functionality by performing the following steps:

1. Connect one audio source to a pair of ADX input jacks.
2. Connect one pair of ADX zone output jacks to an audio amplifier and speakers.
3. Use high quality cable and keep the lengths as short as possible.
4. Turn on the source, amplifier and the ADX for an initial test. Verify that the audio pathway is performing acceptably by selecting the appropriate source input and zone output from the front panel (detailed instructions for **Front Panel** operation can be found on page 8). You should now hear the source material being played. If you do not, please refer to the **Troubleshooting** section found on page 19. If you are still experiencing difficulty, please contact Technical Support by phone at 859-233-4599 or toll free in the US at 800-322-8346.
5. Connect and test remaining sources and amplifiers in the same way.
6. If no problems have been noted, remove power and continue installation.

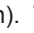
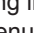
Input and Output Connections and Testing

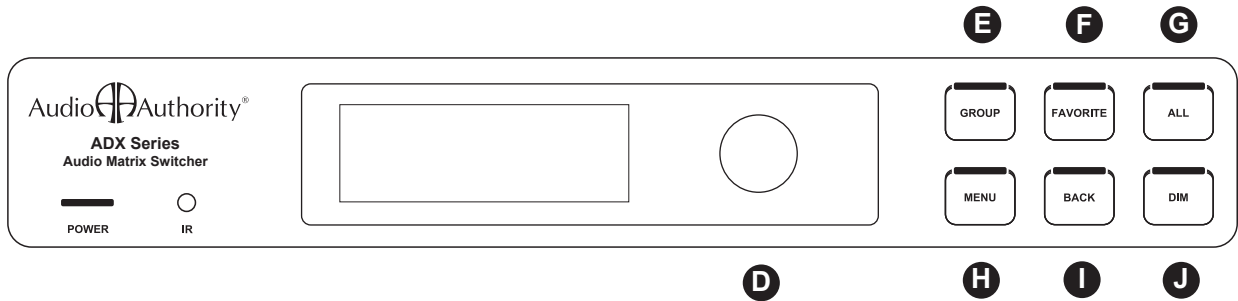
- Determine the wiring configuration for your setup. Label the RCA cables by the connected device (e.g. Input 1 - Cable Box, Input 2 - Music Server, Zone 1 - Kitchen, Zone - 2 Living Rm etc.).
- Connect the power supply - the ADX will immediately power on (there is no power switch), but default settings mute all outputs.
- Apply power to all sources and associated equipment. Use the front panel controls to un-mute, adjust volume and verify audio signal integrity of sources at each zone location.

OPERATION

Front Panel

The front panel is operated by using six touch sensitive keys: Group **E**, Favorite **F**, All **G**, Menu **H**, Back **I**, and Dim **J** and a Multi-Function Knob **D**.

Multi-Function Knob Operation: Used to navigate through all menu items, the multi-function knob can scroll (clockwise or counterclockwise) and select or de-select (press in). The open arrow  symbol is displayed when scrolling through menu items. Once an item has been selected (by pressing in the knob), the arrow will fill in . Next, turn the knob to adjust the value. Finally, press in the knob again to de-select the menu item and scroll to the next item that needs to be adjusted.



Zone/Source Selection Screen

This default screen performs zone and source switching via the Multi-Function Knob **D**.

Group Button > Group Selection Screen **E**

This screen displays all configured groups and allows for group source selection. To learn more about zone groups and defining zone groups, see page 14.

About Groups: The ADX is capable of storing up to 10 Groups. Each group may be assigned a name up to 16 characters long. Groups can only be created using the ADX PC utility (see page 10) or serial commands (see website).

Favorite Button > Favorite Selection Screen **F**

This screen displays all configured favorites. To learn more about defining favorites, see page 11. To select a favorite, rotate the knob until the desired favorite is listed, then press in the knob to activate it.

About Favorites: Favorites are unique zone and source combinations, or audio “scenes” such as party, dinner, game night, etc. Favorites allow the end user to recall these audio scenes with a remote or touchscreen control. The ADX is capable of storing up to 10 Favorites. Each Favorite may be assigned a unique name up to 16 characters in length. Favorites can only be configured and named using the ADX PC utility (see page 11) or with serial commands (see website).

All Button > All Selection Screen **G**

This screen allows switching all output zones to a single source.

Menu Button > Menu Screen **H**

Press the Menu Button to access the following sub-menus: Volume, Equalizer, Tone/Lowpass, Balance, Network Settings, Export File, Import File, Front Panel IR, Display Settings, Firmware Versions, Firmware Update, Factory Default.

Back Button **I**

Press this button to return to the previous screen. Press the back button repeatedly to return to the default Zone/Source screen.

Dim Button **J**

This button toggles through four predefined brightness levels for the VFD and panel LED indicators. After a set period of time (adjustable using the front panel or in the ADX PC utility), the VFD will enter a screen saver mode and turn off. The power and button LED's will remain on at a very low level to show that the unit is receiving power. Any key press or knob adjustment returns the VFD and LED indicators to the last selected brightness level.

Display Settings

Shows current settings for the front panel display: Sleep timer (screen timeout) and display brightness. The sleep timer can be set to 5, 2 and 1 minute(s) or Disabled. Brightness can be set to 25%, 50%, 75% or 100%.

```
Display Settings
> Sleep Timer
  Five Minutes
- Brightness 50%
```

Firmware Versions

Displays the firmware versions of the primary firmware and the boot-loader.

```
> Update Firmware
Firmware..: 2.5.3
Bootloader: 2.0.0
```

Firmware Update

Use to load firmware updates to the ADX using a USB drive. Follow on-screen instructions and/or the text file instructions included with online firmware updates.

```
> ADX_U253.519
```

Factory Defaults

Use to restore all ADX settings to factory default. Follow on-screen instructions.

```
Factory Defaults
> Restore to default
```

PC Setup Utility



The ADX PC Setup Utility is the easiest way to perform advanced setup tasks. Most of these tasks may also be accomplished using serial or Ethernet commands. Some of these settings are available via the ADX front panel controls (see page 8).



audioauthority.com/adx_tips

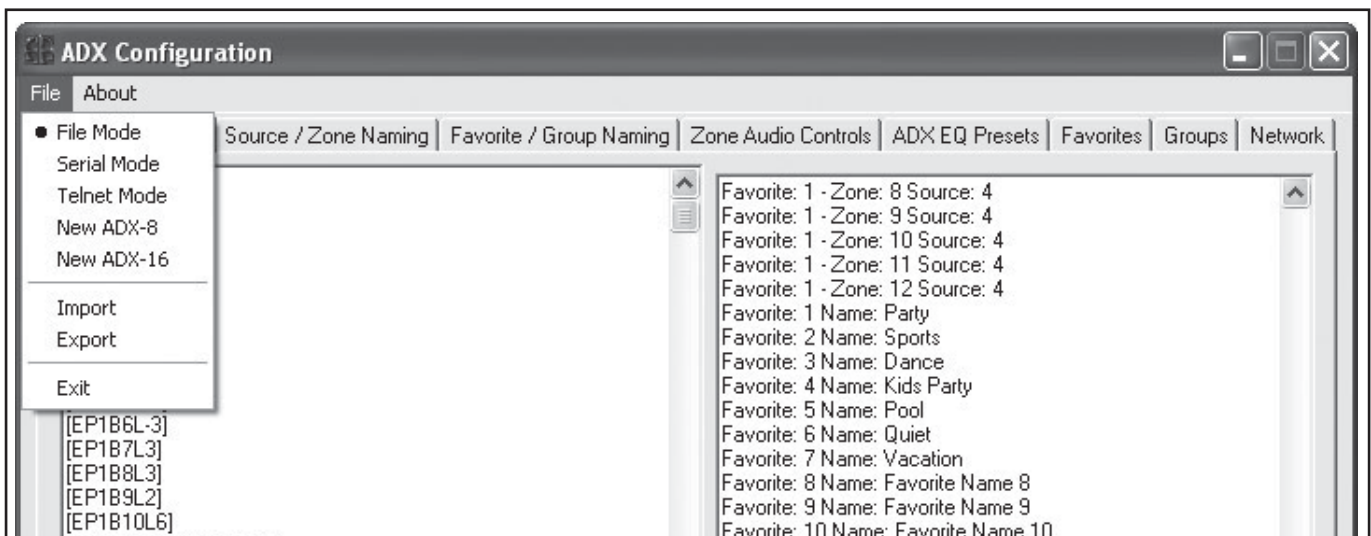
Initial Setup

1. **Select Programming Mode:** Select the mode you will be using for your ADX configuration. There are three options:

- File Mode - (default) requires a USB drive to save and transfer the setup file to the ADX via the back panel USB jack.
- Serial Mode - requires a direct serial port connection.
- Ethernet Mode - requires a connection via a network or a direct Ethernet connection.

2a. **Create A New ADX Configuration:** If you are setting up a new ADX, start with “new ADX-0808” or “new ADX-1616.”

2b. **Modify An Existing Configuration:** If you are modifying an existing setup, import the current setup file. See the table and diagram on page 16 for the ADX serial port pinout.



Configuration File Tab

This tab provides a quick look at all commands and command descriptions in the existing configuration file, primarily used for diagnostics and troubleshooting. In most cases this information should not be modified.

Source/Zone Naming Tab

This tab lists all current Zone and Source Names. To change the names of zones and sources, double click in the appropriate field and type in your changes. Use up or down arrow keys to move to the next field.

Configuration File	Source / Zone Naming	Favorite / Group Naming	Zone Audio Controls	ADX EQ Presets	Favorites	Groups	Network
--------------------	----------------------	-------------------------	---------------------	----------------	-----------	--------	---------

Zone Names		Source Names	
Zone 1	Dining Rm	Source 1	Movie Server
Zone 2	Dining Rm Sub	Source 2	Dads DVR
Zone 3	Den	Source 3	Moms DVR
Zone 4	Den Sub	Source 4	Johns DVR
Zone 5	Great Rm	Source 5	Karens DVR
Zone 6	Great Rm Sub	Source 6	Guest DVR
Zone 7	Pool	Source 7	XBox
Zone 8	Gym	Source 8	PlayStation3
Zone 9	Master Bd	Source 9	XM Radio
Zone 10	Guest Rm	Source 10	Kitchen Dock
Zone 11	Master Bath	Source 11	Garage Dock
Zone 12	Guest Bath	Source 12	Source Name 12
Zone 13	Theater	Source 13	Source Name 13
Zone 14	Bar	Source 14	Source Name 14
Zone 15	Garage	Source 15	Source Name 15
Zone 16	Workshop	Source 16	Source Name 16

Favorite/Group Naming Tab

This tab lists all current configured Favorites and Groups. To change the names of Favorites and Groups, double click in the appropriate field and type in your changes. Use up or down arrow keys to move to the next field.

Configuration File	Source / Zone Naming	Favorite / Group Naming	Zone Audio Controls	ADX EQ Presets	Favorites	Groups	Network
--------------------	----------------------	-------------------------	---------------------	----------------	-----------	--------	---------

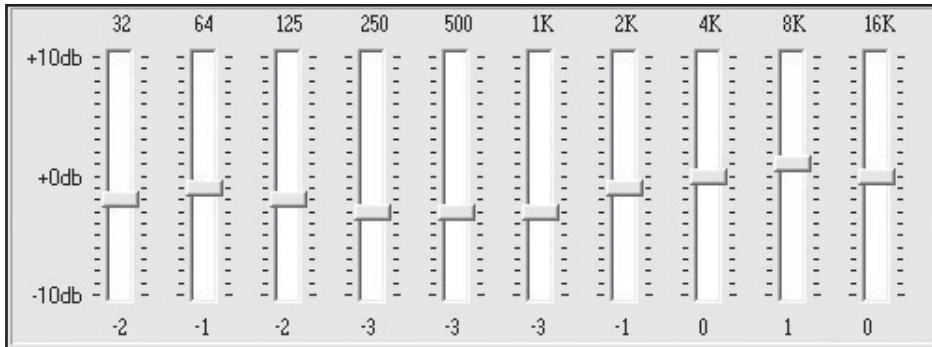
Favorite Names		Group Names	
Favorite 1	Party	Group 1	Living Rm 2.1
Favorite 2	Sports	Group 2	Dining Rm 2.1
Favorite 3	Dance	Group 3	Kitchen 2.1
Favorite 4	Kids Party	Group 4	Hallways
Favorite 5	Pool	Group 5	Outdoors
Favorite 6	Quiet	Group 6	Guest
Favorite 7	Vacation	Group 7	Group Name 7
Favorite 8	Favorite Name 8	Group 8	Group Name 8
Favorite 9	Favorite Name 9	Group 9	Group Name 9
Favorite 10	Favorite Name 10	Group 10	Group Name 10

Zone Audio Controls Tab

This tab includes all software tools required to modify zone-specific DSP settings for the ADX. Below is a summary of each tool:

10-band Zone Equalization (ZQ Mode)

1. Select the zone you wish to adjust
2. Select **ZQ Mode** from the DSP Mode dropdown menu
3. Make desired EQ adjustments for any of the 10 available frequency bands*



Save ZQ settings to an EQ File

Occasionally, it may be desired to save a zone's ZQ settings to an EQ file so that those settings can be used in future installations. This is accomplished using the following steps:

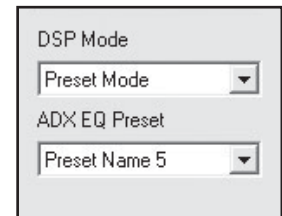
1. Select the zone from which you wish to copy settings.
2. Select ZQ Mode from the DSP Mode dropdown menu.
3. Under the PC Quick EQ Presets section, click the "Save" button.
4. Name the new EQ file.
5. The EQ file is now saved in a folder on your computer for use in other projects. To recall, the EQ file must reside in the same folder with the PC Utility.



Global EQ Presets (Preset Mode)

The ADX includes 10 built-in "Global" EQ presets, which can be used by any ADX zone. By default, all 10 EQ presets are flat. Adjustment of global EQ presets is accomplished using the ADX EQ Presets page (See page 13). Once all EQ presets have been set up, preset mode can recall any global preset to a zone.

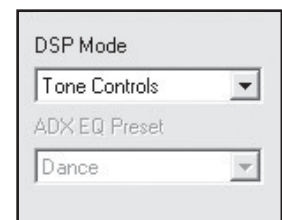
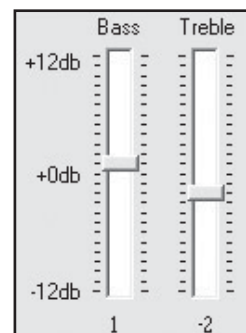
1. First, make sure the desired EQ preset has been set up on the ADX EQ Presets page.
2. Select **Preset Mode** from the DSP Mode dropdown menu.
3. Select a zone.
4. Select the desired EQ preset from the ADX EQ Preset dropdown menu*.



Bass & Treble (Tone Controls)

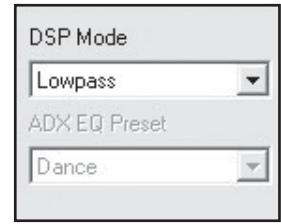
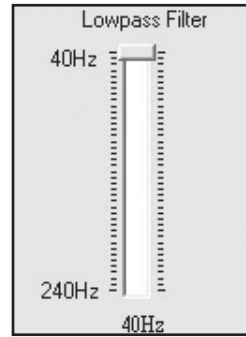
1. Select the zone you wish to adjust.
2. Select **Tone Controls** from the DSP Mode dropdown menu.
3. Make any desired bass and treble adjustments*.

***IMPORTANT NOTE:** In order to hear your changes, you must transfer all utility settings into the ADX using the "export" option from the File menu.



Low-Pass and High-Pass Filters

Used to turn any zone output into a dedicated mono low-pass output for a subwoofer, or high-pass for full range stereo speakers. Additionally, a low-pass zone output can be grouped with a high-pass zone output to create a single 2.1 audio zone. IR and serial group commands (source, volume, and mute) can then be used to control both outputs (low-pass and high-pass) together. See page 14 for instructions on how to set up a zone group.



How to set up a low-pass or high-pass zone output:

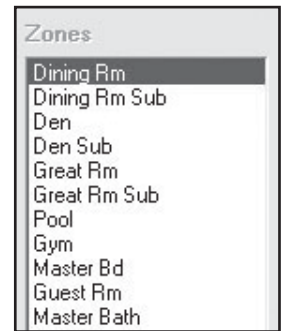
1. On the Source/Zone Naming tab, select and name a zone you wish to designate as a low-pass or high-pass output. If you are grouping a low-pass zone with a high-pass zone, it is recommended to name your zones in pairs for clarity. For example, if Zone 1 is labeled “Master BR”, Zone 2 should be labeled “Master BR Sub”, and so on.
2. On the Zone Audio Controls tab, select a zone for low-pass or high-pass.
3. Select **Lowpass or Highpass** from the DSP Mode dropdown menu.
4. Make any desired changes to the Crossover Frequency. Range of adjustment for low-pass is 40Hz to 240Hz and for high-pass it is 1 Hz to 20,000 Hz*. Set the cross-over points of a 2.1 zone at the same frequency (i.e. low-pass at 100 Hz and high-pass at 100 Hz) for full coverage of frequencies.
5. On the Groups tab, group the low-pass zone output and the high-pass zone output (See page 14 for more information).

EQ/Tone Disabled

If no EQ or tone mode is desired, select EQ/Tone Disabled from the DSP Mode dropdown. All levels will be flat, but previous settings can be recalled by switching back to one of the filter modes.

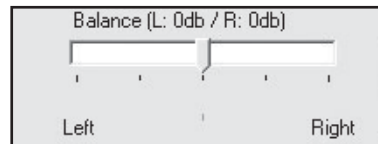
Volume

1. Select a zone.
2. Adjust volume to the desired level*.
3. If your installation requires a fixed volume level from the ADX (i.e. volume level is adjusted through an external amplifier or volume control), select the “Volume Lock” setting. **When an ADX zone is set to “Volume Lock”, it ignores all ADX volume up/down commands (Serial, Telnet or IR) and remains at a fixed full output level.**



Balance

1. Select a zone.
2. Adjust left/right balance levels accordingly*.

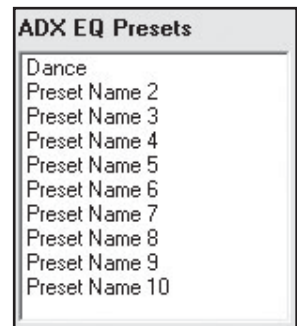


ADX EQ Presets Tab

The ADX includes 10 built-in “Global” EQ presets, which can be used by any zone. By default, all 10 EQ presets are flat and require adjustment for use. The ADX EQ Presets Page allows you to name all 10 presets and adjust band settings for each.

Modify and Store Global EQ Presets

1. Select a ZQ preset.
2. Name the preset in the ADX Preset Name text box.
3. Make any desired adjustments to EQ sliders*.



***IMPORTANT NOTE:** In order to hear your changes, you must transfer all utility settings into the ADX using the “export” option from the File menu.

ADX EQ Presets Tab (Continued)

Save EQ Preset to an EQ File

Occasionally, it may be desired to save a global preset's EQ settings to an EQ file so that those settings can be used in future installations. This is accomplished using the following steps:

1. Select the EQ preset you wish to copy settings from.
2. Under the PC Quick EQ Presets section, click the "Save" button.
4. Name the EQ file.
5. The EQ file is now saved in a folder on your computer for use in other projects. To recall, the EQ file must reside in the same folder with the PC Utility.



Favorites Tab

This tab allows you to quickly setup zone & source combination audio "scenes" such as party, dinner, game night, etc. All favorites can then be recalled with a dedicated serial or IR command or from the front panel of the ADX. To set up a favorite, use the following steps:

1. Label your favorites on the Favorite/Group Naming tab (See page 11).
2. Back on the Favorites tab select a favorite name from the "Choose a Favorite" list.
3. Double click the junction between a zone and a source to include a source/zone combination into a favorite scene.
4. Repeat this step for all other source/zone combinations you desire to be included in the favorite scene.
5. Follow steps 2-4 above for all additional favorites.



Source Name	Sources															
	1	2	3	4	5	6	7	8	9	10	11	12	13	14	15	16
Dining Rm							A									
Dining Rm Sub							A									
Den										A						
Den Sub				A												
Great Rm							A									
Great Rm Sub									A							
Pool				A												
Gym				A												

Groups Tab

Use this tab to put several zones into a group. Groups are useful for controlling several zones at the same time with volume, source selection and mute commands. You can also create 2.1 audio zones (a high-pass and a low-pass zone output joined together) using the group feature (*More on low-pass/high-pass mode see page 13*).

To set up a group, use the following steps:

1. Label groups on the Favorite/Group Naming tab.
2. On the Groups tab (*illustration on page 15*) double click the junction between a zone and a group to include a zone in a group. The group name is displayed in the upper left corner when you click on a junction square.
3. Repeat this step for all other zone/group combinations desired.

Groups Tab (Continued)

Configuration File Source / Zone Naming Favorite / Group Naming Zone Audio Controls ADX EQ Presets Favorites Groups Network											
Group Name		Groups									
Zones	Group Name 8	1	2	3	4	5	6	7	8	9	10
	Dining Rm	G			G						
	Dining Rm Sub	G			G						
	Den		G		G						
	Den Sub		G		G						
	Great Rm			G	G						
	Great Rm Sub			G	G						
	Pool					G				G	
	Gym									G	
	Master Bd							G	G		
	Guest Rm						G				
	Master Bath							G	G		
	Guest Bath						G				

Network Tab

This page allows you to adjust the following:

1. Network settings (Enable DHCP, IP Address, Network Mask & Gateway).
2. Lockouts (Front Panel Buttons & Front Panel IR).
3. Display brightness.

Configuration File Source / Zone Naming Favorite / Group Naming Zone Audio Controls ADX EQ Presets Favorites Groups Network	
<p>Network Card Settings</p> <p><input type="checkbox"/> Enable DHCP?</p> <p>IP Address <input type="text" value="IPAddress"/></p> <p>Netmask <input type="text" value="Netmask"/></p> <p>Gateway <input type="text" value="Gateway"/></p>	<p>Lockouts</p> <p><input checked="" type="checkbox"/> Lock Front Panel?</p> <p><input type="checkbox"/> Front Panel IR Lockout?</p> <p>Display Brightness</p> <p>Level: 25%</p> <p><input type="range" value="25"/></p>

USING SERIAL AND ETHERNET




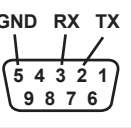
Follow the instructions for your Control4, RTI, URC, or other controller to connect to the ADX using the serial settings below, or Ethernet settings accessible via the ADX front panel menu. (A file containing the ADX serial and ethernet commands can be downloaded from the Audio Authority website, audioauthority.com/adx_tips).

- At idle, the ADX checks for received serial or telnet data every 200 ms. Once data has been received, it checks every 1 ms to handle rapid groups of commands and macros. After 100 ms of inactivity, it returns to checking at intervals of 200 ms.
- The ADX telnet server allows two clients to be connected at one time. Each client connection has a time out of 15 minutes; if a client crashes and does not close the connection properly (sending an EOF) that connection remains busy until it times out.

Connecting to the ADX RS-232 Port


System controllers and PCs can send all setup and control commands as well as receive feedback via the RS-232 serial port.

- Important: If a PC is connected directly to the ADX RS-232 port, use a *standard* serial cable.
- Communication Settings: baud rate is 9600 bps, 8 data bits, no parity, 1 stop bit, and no flow control.
- See the table and diagram below for the ADX serial port pinout.

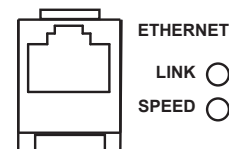
DB-9 connector  on rear panel of ADX.			Transfer Rate 9600 bps
			Data Bits 8
			Parity None
			Stop Bits 1
DB9 Pin out (Standard cable)	Pin 2, Tx	Flow Control None or Off	
	Pin 3, Rx	Character type ASCII	
	Pin 5, Ground	Connector DB-9	
	Shell, Ground	Electrical Rating Pins 2 and 3, ±15 VDC	

Using a Computer via Ethernet

To use a PC or Mac with the ADX, use a telnet client or terminal program to send commands (listed in Appendix A) through the Ethernet port on the ADX. Connect a computer directly to the Ethernet port using a crossover cable, or alternatively use a standard Ethernet hub or switch and a standard patch cable. Once connected to a computer or network, the ADX by default attempts to obtain an IP address automatically using DHCP. To use static settings, *see the detailed instructions on page 17*.

There are two LED indicators located next to the Ethernet port  on the rear panel that help to identify connection issues:

- Link - The Link LED is steadily lit if a connection is detected and flashes when activity is present.
- Speed - The Speed LED is off for 10 base T, and on for 100 base T.



DHCP

DHCP is enabled on the ADX by default. If DHCP is enabled on your network, simply connecting the ADX to the network with an existing DHCP server enables it to obtain all necessary information.

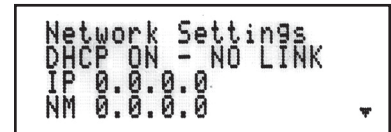
Static Addressing Connected Directly to a PC

The ADX must be given an IP address which will not conflict with the PC. Go to the network settings (which are found in control panel -> network -> local connection properties of a PC running Windows XP).

Change the TCP/IP protocol properties, and set the IP address, gateway, and subnet mask, if they are not already set. This can be arbitrarily done on a direct connection, but a good choice for the settings would be IP address of **192.168.0.1**, subnet mask of **255.255.255.0**, and an empty default gateway. Once these values have been set, use serial commands (page 21) to set the network settings of the ADX in a similar manner, but use a different IP address than that of the computer (for example, 192.168.0.2).

! Static Addressing on a Network

The ADX must be set to the same settings as the PC except for the IP address, which must not conflict with anything else on the network. To determine this in Windows, use the DOS prompt (Start->Run->cmd) commands ipconfig and ping. Ipconfig lists the PC's settings, and ping tests addresses to make sure that nothing else on the network has that address. Enlist the help of a network administrator if you are unfamiliar with setting up a network connection.



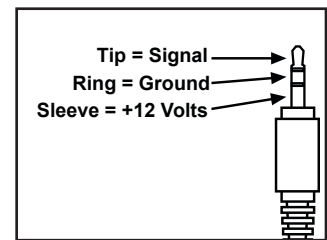
ADX screen image showing Network Settings with DHCP set to ON, with no link established.

Once a connection is established, a telnet program such as Hyper Terminal, Teraterm, PuTTY etc, must be used to connect to the device. Enter the IP address of the ADX and leave the default port (23) to connect. Once connected, standard serial commands can be issued in an identical manner to serial control.

USING AN IR CONTROL SYSTEM

The ADX uses a three wire IR circuit. It is imperative that the correct polarity be maintained when connecting third party IR equipment. The 3.5mm pinout is shown here and the connecting block pinout is screen printed on the back panel of the ADX. Patch the IR signal from your IR receiver directly to the IR input port on the rear panel using the connection method of your choice. Alternatively, adhere an IR emitter from your infrared system onto the ADX front panel IR sensor.

If the ADX IR codes are available from your remote control company, download and/or activate those files. A CCF file containing the latest codes can be downloaded from the Audio Authority website, audioauthority.com/page/ir.



3.5mm IR Pinout

! Tips for Using Infrared Control

- If you are using standard hand-held IR remote controls, ensure correct operation by avoiding sources of light pollution such as Plasma and LCD TVs, direct sunlight, fluorescent light, etc. Experiment with the physical placement of the IR sensor to avoid interference.
- If a source of interference cannot be eliminated or avoided, use IR sensors that block that type of interference, such as Plasma-proof or LCD-proof sensors.

In addition to basic IR commands, discrete IR commands are now included such as:

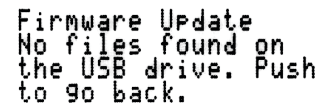
- Connecting a zone to a source
- Mute on/off and mute toggle a zone
- Volume up/down in a zone
- Balance left/right/center in a zone
- Bass up/down/flat in a zone
- Treble up/down/flat in a zone
- Connecting a group to a source
- Group volume up/down
- Group mute on/off/toggle

Appendix A: Firmware Update Procedures

The latest version of firmware is available for download from audioauthority.com/page/firmware.

To update version 1.2.0 and later to the latest version:

1. Copy the firmware file (e.g. "adx_v253") onto a USB drive.
2. Insert the drive in the USB port on the rear panel of the ADX.
3. Press the menu key and navigate the firmware update menu item.
4. Follow the prompts and select the firmware file.
5. After a short delay the ADX reboots and performs the firmware update.
6. Once the update has finished, the ADX reboots and resumes operation with the new firmware version.

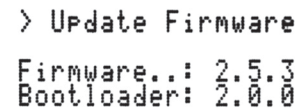


```
Firmware Update
No files found on
the USB drive. Push
to go back.
```

If you see this screen, make sure the firmware file is named correctly and is on the root level of the USB drive.

To update version 1.0.1b and earlier to the latest version:

1. Copy the firmware file (e.g. "adx_v253") onto a USB drive.
2. Insert the drive in the USB port on the rear panel of the ADX. Cycle ADX power.
3. During boot up, the front panel displays "Push knob for firmware update." Press the front panel knob.
4. Follow the prompts to update the system card firmware and reboot the ADX.



```
> Update Firmware
Firmware.: 2.5.3
Bootloader: 2.0.0
```

Push to select the firmware file.

Limited Warranty

If this product fails due to defects in materials or workmanship within one year from the date of the original sale to the end-user, Audio Authority® guarantees that we will replace the defective product at no cost. Freight charges for the replacement unit will be paid by Audio Authority (Ground service only). A copy of the invoice from an Authorized Reseller showing the item number and date of purchase (proof-of-purchase) must be submitted with the defective unit to constitute a valid in-warranty claim.

Units that fail after the warranty period has expired may be returned to the factory for repair at a nominal charge, if not damaged beyond the point of repair. All freight charges for out-of-warranty returns for repair are the responsibility of the customer. Units returned for repair must have a Customer Return Authorization Number assigned by the factory.

This is a limited warranty and is not applicable for products which, in our opinion, have been damaged, altered, abused, misused, or improperly installed. Audio Authority makes no other warranties either expressed or implied, including limitation warranties as to merchantability or fitness for a particular purpose. Additionally, there are no allowances or credits available for service work or installation performed in the field by the end user.

ADX Serial Number _____

Date of Purchase / Installation _____

Appendix B: Troubleshooting

Symptom

Possible Cause

- | | |
|---------------------|---|
| No Power | <ul style="list-style-type: none">• Check for available AC power from wall outlet.• Check to make sure there is 18V available from the provided power supply. If not, reset the power supply (remove the power supply from the outlet and reconnect). |
| No Audio | <ul style="list-style-type: none">• Check for proper operation of Source and Receiver or Amplifier.• Ensure cabling between the ADX and third party equipment is good and connected properly.• Ensure power is connected to the ADX.• Check volume levels at receiver and in ADX controls. |
| No Ethernet Control | <ul style="list-style-type: none">• Refer to page 16 for controlling the ADX through Ethernet. If problems persist, contact your installer or network administrator for assistance. |
| No RS232 Response | <ul style="list-style-type: none">• Make sure the Baud Rate matches between the ADX and the Serial Terminal program being used to issue commands. ADX Default = 9600.• Make sure Flow Control is turned off.• Check cable pinout for compatibility between AD and control equipment. |
| No USB Response | <ul style="list-style-type: none">• Ensure the USB storage device you are using is USB 1.1 or USB 2.0 compliant.• Some USB storage devices may not be compatible with the ADX. If your device meets the standard requirements but will not function with the ADX, try using a different USB storage device. |
| No IR Response | <ul style="list-style-type: none">• Check the menu to see if front panel IR sensor is enabled (it is disabled by default).• Ensure proper connection and operation of any external IR sensor. |

If you have applied the above troubleshooting suggestions and are still experiencing difficulties, contact Audio Authority Technical Support by phone at 859-233-4599 or toll free within the US at 800-322-8346. You can also email Technical Support at support@audioauthority.com.



audioauthority.com/adx_tips

Specifications

Analog/Digital	Analog, Stereo
Digital Input/Output Type	N/A
Input Impedance	100K
Min Load Impedance	10K
Multi-channel Digital	N/A
Frequency Response	10-25kHz
S/N Ratio	82dB
THD+Noise	0.02%
Crosstalk	-85dB
Agency Approvals	FCC
DC Input Connector	5.5 x 2.1mm
DC Input Voltage/Polarity	18V Center Positive
Max DC Input Current	600mA/1.1A
Power Supply	571-014/571-023
Heat Output	38/68 BTU/hr



2048 Mercer Road, Lexington, Kentucky 40511-1071
800-322-8346 • 859-233-4599 • Fax: 859-233-4510
www.audioauthority.com • support@audioauthority.com

752-598 20150413