

User Manual

Model 1725M-BT
Soundbar Demonstrator with



Audio  Authority®

Introduction

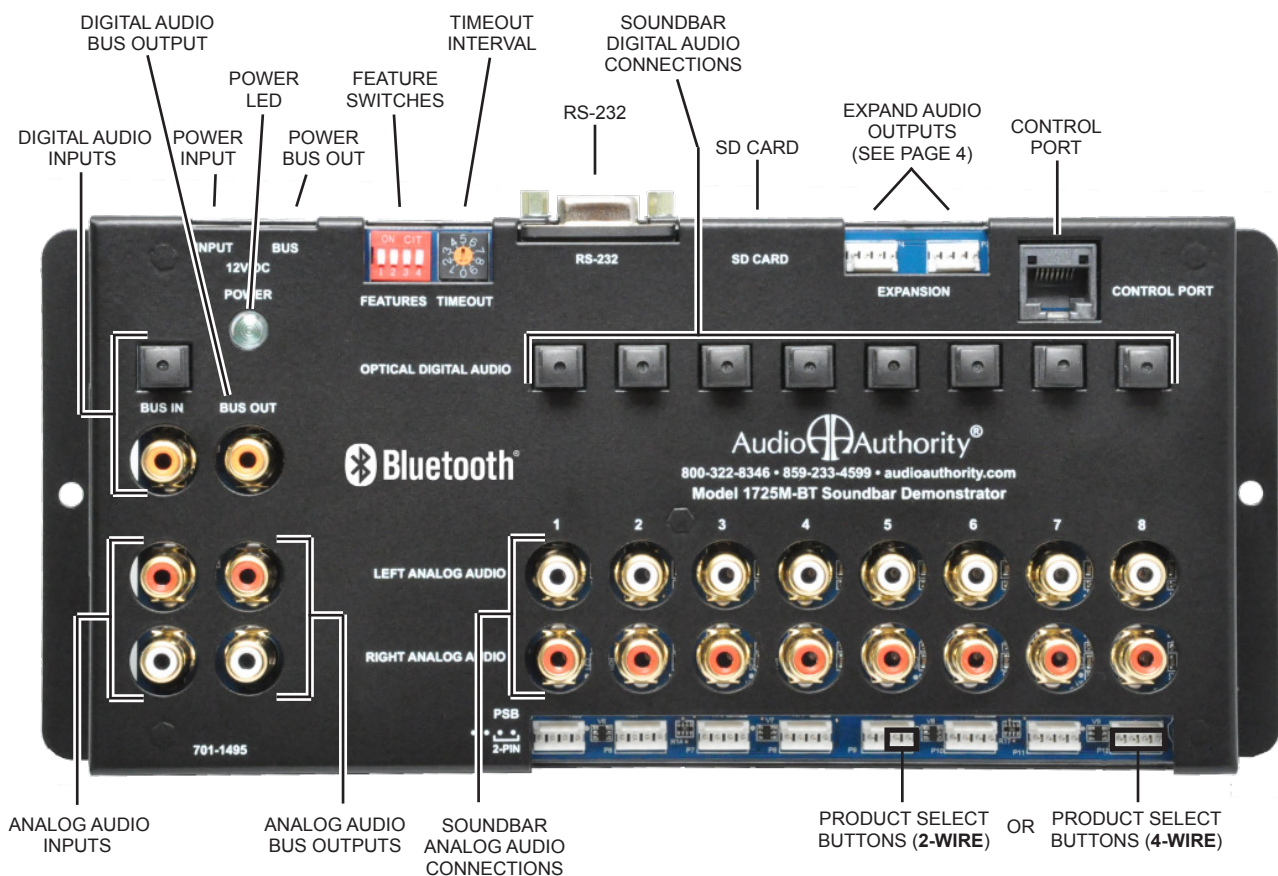
The Audio Authority® 1725M-BT is part of a programmable switching system that interacts with a media player to demonstrate soundbars. Depending on the interface, the 1725M-BT can also pair with a customer's *Bluetooth*® audio player for soundbar demonstration. Basic product selection is possible via push-buttons, and advanced functionality is available via RS-232 or the Control Port.



COMPATIBLE WITH BRIGHTSIGN® MEDIA PLAYERS

Features

- One audio input to 8 soundbars.
- Serial port communicates with media player to switch audio output between HDMI and optical/analog outputs to compare TV speakers with soundbar audio (call for details).
- Receives commands via Cat 5 cable or RS-232 from custom control devices such as a capacitive touch panel, or a media player.
- Bluetooth customer audio connection via pair command.
- Bluetooth Clear Device List option can be activated to allow access from other users (Feature 2).
- Timeout feature returns the demo system to silent attract mode after an idle period (adjustable in 15 sec. intervals).
- Soundbar keep-awake option prevents soundbars from entering sleep mode (Feature 1).
- Micro SD card slot for field updates.



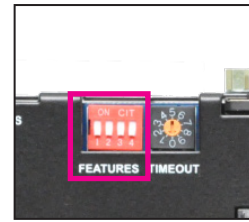
Package Contents

Before installing this product, please check the packaging and make certain the following items are contained in the shipping carton:

- 1725M-BT Soundbar Demonstrator
- 571-043 12V DC 1.5A power adapter
- 670-194 hardware pack

Demo Features

Keep Awake: If the keep-awake feature is enabled, it sends a short, inaudible tone to soundbars to prevent them from entering sleep mode. Set Feature Switch 1 as shown to disable or enable the keep awake feature. If timeout is enabled, keep awake operates while all products are deselected. If the timeout switch is set to 0 (never time out) then keep-awake operates constantly. Default = ON.



KEEP AWAKE SWITCH SETTINGS:

	1	2	3	4
Disabled	OFF	-	-	-
Enabled	ON	-	-	-

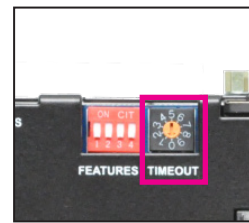
Note: After making Feature switch changes, cycle power to the 1725M-BT.

Clear Bluetooth Option: When a pairing session times out, it simply closes all Bluetooth connections that are active if feature switch 2 is off. When feature switch 2 is on, it closes the Bluetooth connections but also clears the device list, forgetting any phone previously paired. Default = OFF.

CLEAR BLUETOOTH SWITCH SETTINGS

	1	2	3	4
Disabled	-	OFF	-	-
Enabled	-	ON	-	-

Timeout Interval: At the end of the timeout interval (a period of inactivity) all outputs are deselected. Turn timeout OFF (set to 0) if the demo should play continuously. 0 = no timeout, 1 = 15 second timeout, 9 = 2.25 minute timeout. Default = 2 (30 seconds).



Audio Connection: Connect an audio source (analog, and or optical/coax) to the 1725M-BT input. Connect an optical cable from the 1725M-BT output to each soundbar. The optical input connection outputs digital audio on the coax bus output. Only one digital input may be used.

Power: Connect the 1.5 amp 12V power adapter to Power Input. The Power Bus Out may be used to power more Audio Authority compatible devices within the power supply's capacity by using an 801-077 power extension cable. The 1725M-BT draws 600mA.

Control

The 1725M-BT is designed to work with a control panel and/or push-buttons. If you have both connected, the switching activity is shown in the lights on the control panel and the buttons. Push-buttons are capable of selecting soundbar outputs, but not the TV sound or Bluetooth pairing functions. The 1725M-BT is compatible with 2-wire or 4-wire switches. When using 2-wire switches, use the right two pins of the PSB port as shown in the diagram on page 2.



Control Port: Allows product selection via custom control device such as a touch panel as shown in the diagram on page 4.

Push-buttons are available in several styles and colors.

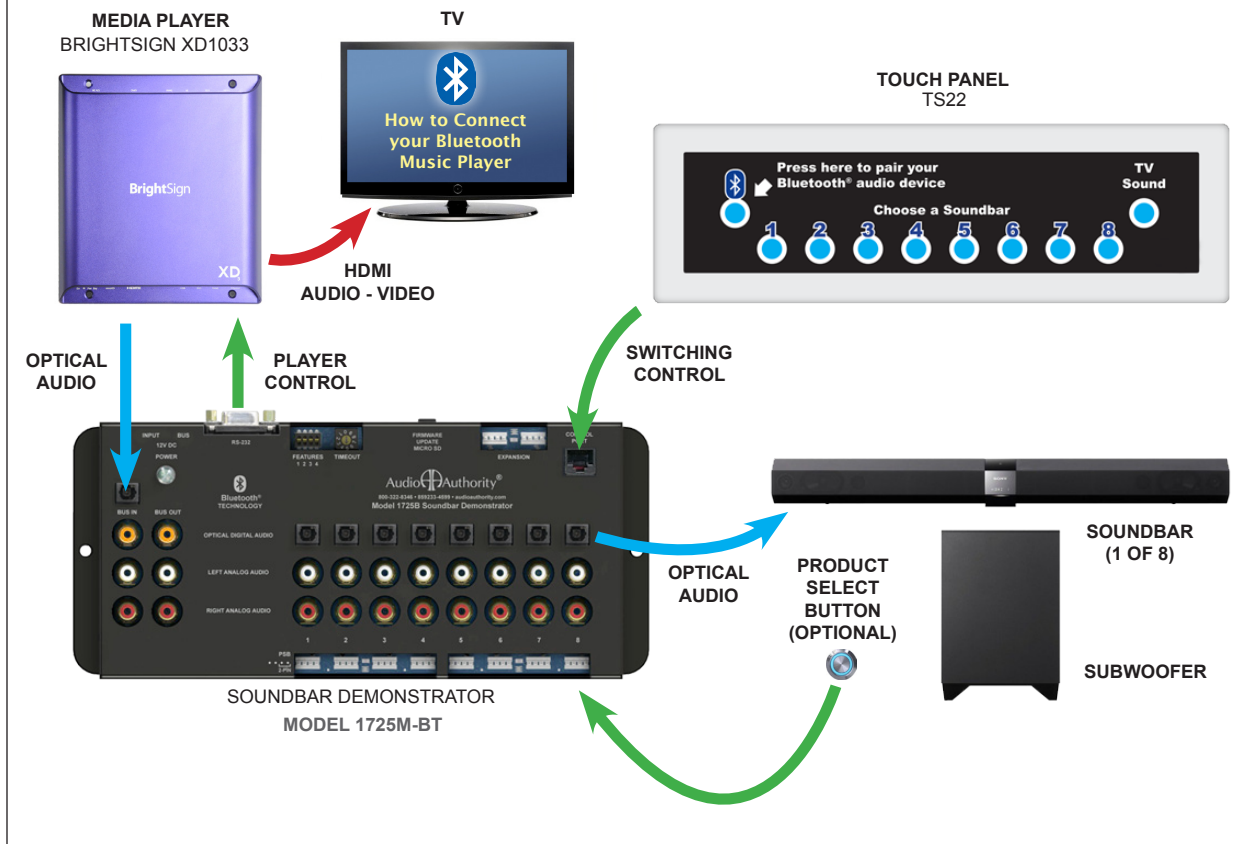
RS-232 Port: The RS-232 port communicates with other serial devices at a 9600 Baud rate. Serial commands shown in table below.

Command	Result	Command	Result
[A0]	All Products Off	[A5]	Product Position 5 On
[A1]	Product Position 1 On	[A6]	Product Position 6 On
[A2]	Product Position 2 On	[A7]	Product Position 7 On
[A3]	Product Position 3 On	[A8]	Product Position 8 On
[A4]	Product Position 4 On		

RS-232 serial commands.

Example System

In this example, a customized TS22 touch panel and Brightsign XD1033 media player enhance the demo. Press any Product Select Button (PSB) or a key on the touch panel to hear soundbars or TV sound playing the video soundtrack. Press the Bluetooth button on the touch panel and the 1725M-BT becomes discoverable to pair with a phone or other Bluetooth media player. Once paired, Bluetooth audio plays through the selected soundbar until the timeout, until you press the TV Sound key on the touch panel, or until you unpair your device.



About Expansion

Two modules may share one source via the audio bus output. Connect the Expansion Bus to enable deselect behavior (only one out of 16 soundbars plays at any one time). *Note: the Bluetooth feature is not compatible with expansion.*

Installation

- Attach the 1725M-BT to a flat surface with the screws provided.
- Connect the HDMI cable from a compatible media player to the TV.
- Connect the RS-232 cable from the 1725M-BT to a compatible media player.
- Connect the optical cable from the 1725M-BT to a compatible media player.
- Connect optical cables from the 1725M-BT to soundbars.
- Connect PSBs (optional) to the 1725M-BT.
- Connect the Cat 5 cable from the 1725M-BT Control Port to the touch panel.
- Connect power adapter to AC power, then to the 1725M-BT Power Input.

Audio Authority®

2048 Mercer Road, Lexington, Kentucky 40511-1071
800-322-8346 • 859-233-4599 • Fax: 859-233-4510
www.audioauthority.com • support@audioauthority.com

752-719
Rev. 20170828