

# Supplementary Instructions for the 980EZ System Module

The 980 System Module is vital to the function of several features of the Access System. The new 980 has essentially the same functions, but slightly different organization than the original 980 module. Important features and landmarks are described here for comparison.

## System Bus Headers

The 980EZ has smaller System Bus headers. To adapt to larger System Bus sizes, use 802-319 cable (call Audio Authority Technical Service for assistance, 800/322-8346).

## Indicator LEDs

The 980EZ indicator LEDs are all in one column, except for the white Bus Monitor LED, which is located among the System Bus headers.

## TheftAlert™

To activate TheftAlert™ on the original 980, you pulled the jumper from the two pins labeled, "CUT TO ACTIVATE." On the 980EZ, TheftAlert™ is activated by flipping the rocker switch labeled "TA RESET" OFF. Flip this switch ON momentarily to reset TheftAlert™ in the absence of a 902 or 903 control panel. You may also install a remote TheftAlert™ reset switch.

## Metal Cover

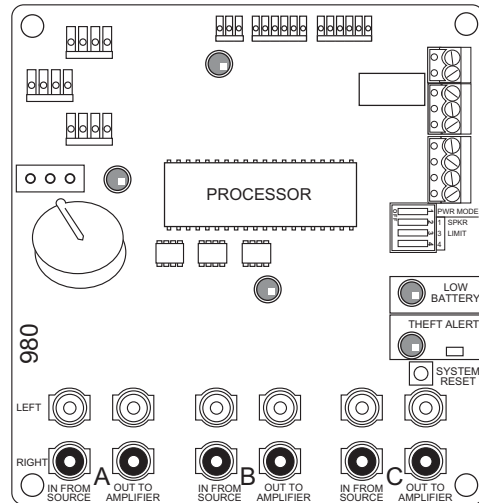
The 980EZ has an optional protective metal cover, providing a surface for clear legends and identification. It also shields the module against electrical noise.

If you have any difficulty with your 980EZ or any of our other products, we are eager to help. Call Technical Service at 800/322-8346 for assistance.

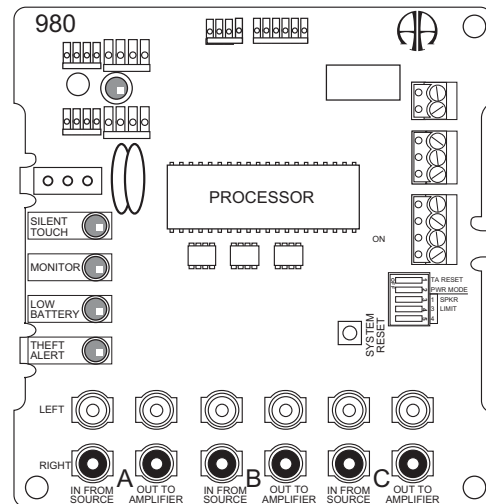


2048 Mercer Road, Lexington, Kentucky 40511-1071  
 Phone: 859/233-4599 • Fax: 859/233-4510  
 Customer Toll-Free USA & Canada: 800/322-8346  
 Website: <http://www.audioauthority.com>

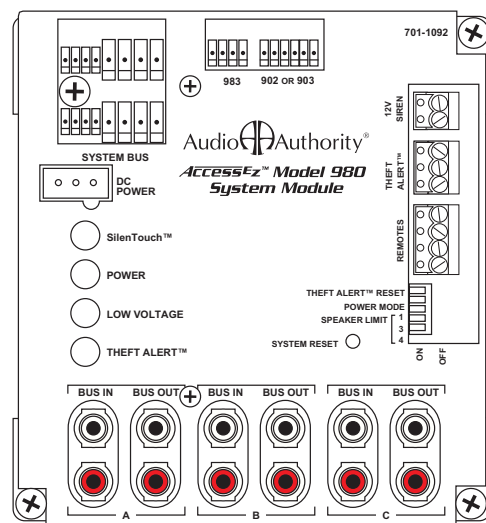
Keep this sheet inside your  
Access™ System Setup Manual



Original 980



980EZ without cover



980EZ with cover